

About BeMA

One of the most significant developments for Lebanese art and culture in a generation, **the Beirut Museum of Art (BeMA)** is a new museum launched in Beirut.

A new cultural platform highlighting modern and contemporary art from Lebanon and the region, the museum will be privileging Lebanese and Lebanese Diaspora artistic creation, while also introducing regional and international artistic traditions and production. BeMA will engage with diverse communities and host cultural and educational programs in the service of building a committed civil society.

BeMA will also create opportunities for the production of new artistic works, bring together different narratives, and foster conversations in connection with cultural organizations and partners across the region and globally, enhancing Beirut's image as a center for the open and free exchange of ideas.

Site

BeMA will be located in the heart of Beirut on a land that belongs to the Saint-Joseph University of Beirut (USJ).

Situated within yards of the National Museum, along the demarcation line that once divided Beirut between East and West, BeMA will effectively reverse this past and pull in diverse communities to gather and interact at a communal meeting point beyond sectarian limitations.

It lies along the museum mile, a route studded with at least three other major cultural destinations.

Museum Program

In the lead-up to opening its doors, BeMA is already engaging audiences through a series of evolving programs and commissioned artists' interventions, as well as a collaboration with community arts organizations across Lebanon. Programming includes artists' publications, research and education initiatives, an online archive, and ongoing new commissions developed in collaboration with key local, regional and international partners.

To this end, BeMA will operate:

As a socially engaged institution, bringing the work and voices of the artists into the realm of civil society and highlighting the important role of the arts as a facilitator.

As a learning institution, offering a diverse educational program and providing the public with opportunities to interact with the art critically.

As a collective memory institution, by presenting and engaging with artistic output that is inclusive and representative of all factions of society, BeMA will acquire the role of a cultural mediator and a trusted partner within the community.

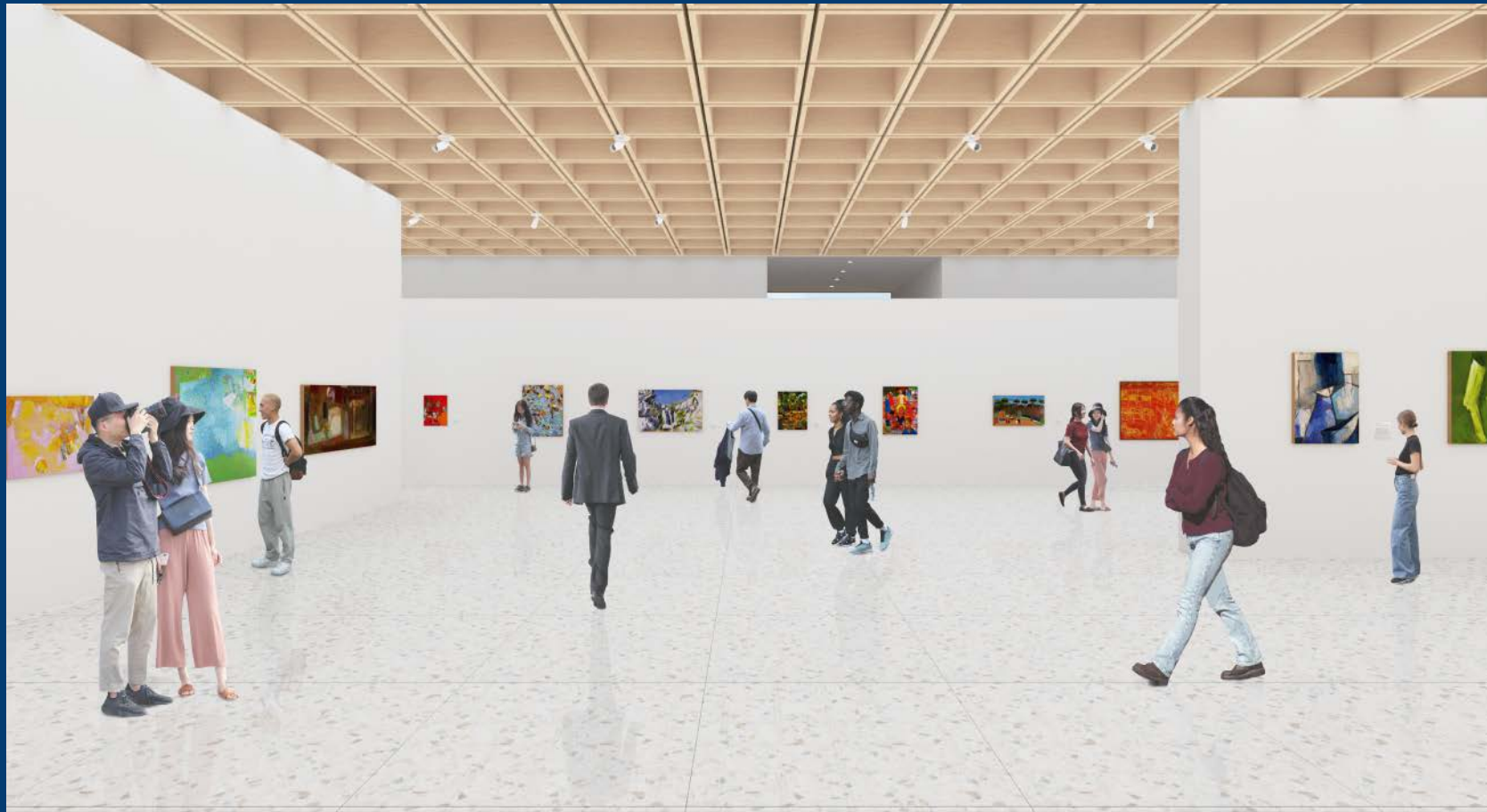
Architecture

Against all odds, on February 25, 2022, BeMA broke ground, laying the first stone of the museum. After permit approvals and finalized architectural plans, the foundation for the museum has become a reality, enabling the subsequent steps of construction.

Architect Amale Andraos, special adviser to the president of Columbia University and former dean of the Columbia University Graduate School of Architecture, describes her design as an act of willful optimism.

The purpose of the museum is to help the Lebanese imagine a brighter future that mirrors their humanity and universal connection to other civilizations and cultures.





The building features many balconies, a throwback to the architect's recollections of Beirut, and a nod to its emphasis on accessibility. Andraos's design, conceived as an open museum, is a hybrid of Modernist balconies and Beirut's vintage Art Deco verandas.

The outdoor rooms and galleries provide multiple projects and event venues for educational and other activities. The gardens and outdoor spaces are a break from closed fortress-like museum facades, offering an inviting typology that connects it to the city, its people, and the life outside.

The architect has focused on exactly what a museum design should express in the 21st century: a museum as a community, not a temple.



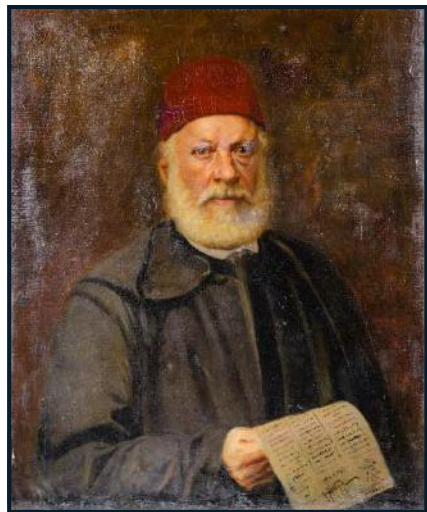
The collection

As the foundation of its permanent collection, BeMA has secured the important art collection of Lebanon's Ministry of Culture, comprising over 3,000 works of art created from the early 1900s to 2015.

This impressively comprehensive collection contains the masterpieces of over 470 Lebanese artists and includes paintings, sculptures, works on paper, and photographic works.

The collection reflects an unfolding narrative of Lebanese heritage through art. BeMA will be a space dedicated to representing Lebanon's rich history and extending shared cultural memory.

AL NAHDA – The Lebanese Renaissance 1840-1880



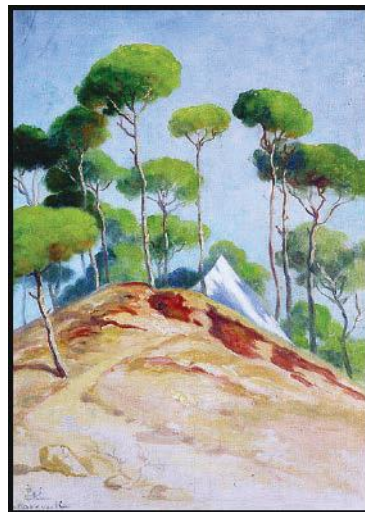
Habib Srour

Establishment of a Future Modern Nation 1880-1920



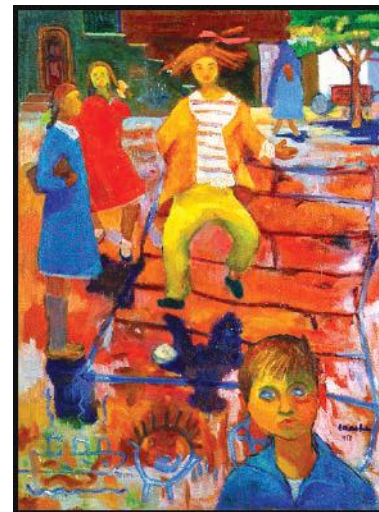
Khalil Saleeby

The Birth of Modernism and the French Mandate 1920-1943



Moustafa Farroukh

Lebanon's Golden Age and Independence from France 1943 -1960



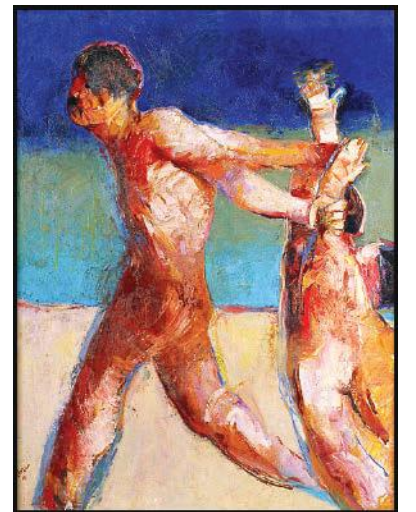
Amin El Bacha

Abstract Expressionism and Surrealism 1960-1975



Yvette Achkar

War 1975-1990



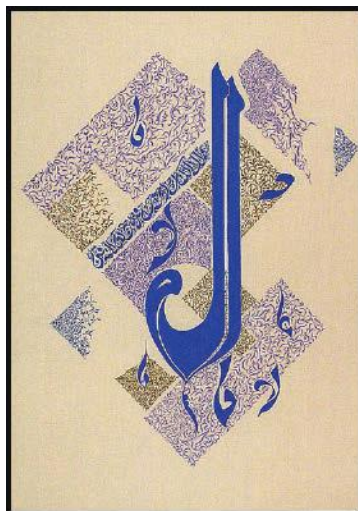
Hassan Jouni

Post-War 1990-2001



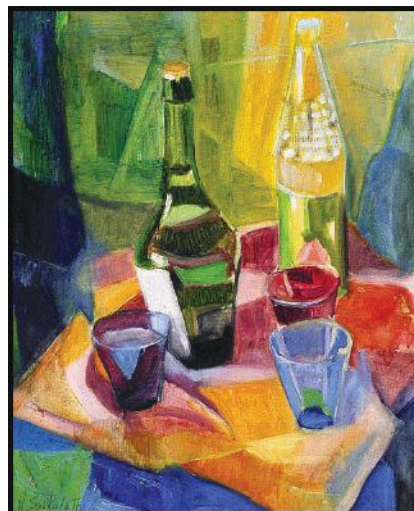
Mohamad El Rawas

Calligraphy



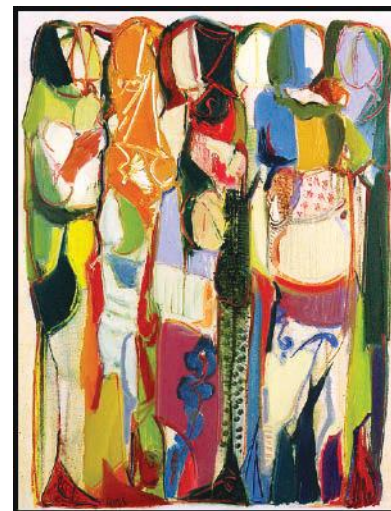
Mohammad Ghaleb

Still Lifes



Nadia Saikali

People & Places



Paul Guiragossian

Works on Paper



Moussa Tiba

Sculptures



Saloua Raouda Choucair

Conservation – Preserving the Lebanese National Heritage

After receiving this impressive and substantive collection of Modern and Contemporary art on indefinite loan, BeMA launched, in 2017, the restoration and conservation lab with the support of the Cultural Preservation Program of the German Federal Foreign Office. To date, a team headed by conservator Kirsten Khalifé has restored and conserved over 300 paintings and works on paper.

BeMA has also collaborated with the **German State Academy of Art and Design** as well as with the **Cologne Institute of Conservation Sciences** in setting up online training workshops. Postgraduate fellows from Germany and Switzerland and Lebanese interns from three Lebanese universities worked side by side under the supervision of German tear-mending specialist Petra Demuth.

Continuous professional development, academic exchanges, and the establishment of a professional program in conservation are the pillars of BeMA's Restoration Program.





خليل زغب
KHALIL ZAGHIB

Where we stand

While works progress on the building, largely supported by generous donors who believe that art and culture are necessities for a better Lebanon, a high standard of museum programs has been operating in the background. With department heads for Educational, Research, Archival, and Restoration programs, alongside continuing Scholarship programs, BeMA has inaugurated its mission to create social change and become a beacon of cultural exchange on an international scale.

A Outreach

Outreach programs, which began in 2015, are rooted in a strong belief in the transformative power of the arts and the right of all people to access culture.

BeMA sees its community as an active and instrumental partner in stimulating social interaction and boosting a culture of creativity. Adults and children from all backgrounds will participate in the museum's programs and activities for the purpose of building a committed and engaged civil society.

Overview of Outreach activities to date

- **Roundtables and talks hosting architect and professor Amale Andraos** – USJ, Beirut, March 2022
- **BeMA's Groundbreaking Ceremony** – Museum site, Beirut, February 2022
- **"LIFT" art exhibition** – UNESCO LiBeirut, Beirut, January 2022
- **Glenn Lowry, Director of MoMA in conversation with Lebanese artist Marwan Rechmaoui** – Online from the MoMA and Sfeir Semler Gallery in Beirut, June 2021
- **Virtual tours series: The Metropolitan Museum of Art** – Online, 2021-2022
- **Lebanon Then and Now: A Photography Exhibition from 2006 to 2020** – The Middle East Institute, Online, Summer 2020
- **"Revolt" photo exhibition** – Beirut, November 2019
- **BeMA Restoration and Education Programs Exhibition at the Beirut Art Fair** – Beirut, September 2019
- **"The Changing Role of Museums in the Middle East", panel discussion** – The Middle East Institute, Washington DC, April 2019
- **"Cycles of Collapsing Progress" art exhibition and conference** – Tripoli, September 2018
- **Mathaf Mathaf commissioned work** – National Museum, Beirut, May 2018
- **"Water" Jezzine art residency** – Lebanon, May 2017
- **"Works on Paper" artists' interventions in Lebanese newspapers** – Beirut, June 2016
- **"Plain Secret" participatory theater workshops** – Baalbeck, October 2016
- **Ras Masqa artists-in-residence program** – North Lebanon, March 2016
- **"Letter to a Refusing Pilot" by Akram Zaatari** – Venice Biennale, Venice, June 2013
- **"Subtitled, With Narratives from Lebanon" art exhibition** – London, November 2011
- **"Convergence, New Art from Lebanon" art exhibition** – Washington DC, April 2010

Previous artwork

Khalil Zgaib *A Rustic Wedding*, Oil on Masonite, 60 x 90 cm

Where we stand

Education

In 2017, BeMA launched a decade-long artist-in-residency program for the Lebanese public school system in partnership with the Lebanese Ministry of Education and Higher Education, to reach 40 Lebanese public schools and 1,000 students across Lebanon. The program provides youth from different social and geographical backgrounds with the unique opportunity to acquire new skills and broaden their horizons by working with artists directly.

Participating Public Schools to date:

- **Al Daoura co-ed public school**, Akkar
- **Zahle al Jadida public school**, Zahle
- **Tyre Secondary School for girls**, Tyre
- **Rachel Edde public school**, Sebeel
- **Al Oula public school**, Byblos
- **Haret Saida public school**, Saida
- **Co-ed school of Damour**, Damour
- **Emir Chakib Erslan public school**, Verdun
- **Intermediate public school**, Broumana
- **Kamal Jumblatt public school**, Chouf
- **The modern school for girls**, Tripoli
- **Estephan Atieh public school**, Batroun
- **Abdul Karim Al Khalil public school**, Beirut

Research

Launched in 2021, the research program is led by eminent historians of Lebanese Art and Lebanese History. As part of its core mission and main pillar, the department will be offering publications and exhibitions delving into Lebanese art. Artworks and artists are being accessed, reviewed, studied, contemplated, and positioned in an artistic historical context. The physical structure of the library, housing the archives, books, manuscripts, and periodicals, will foster the research program.





Governance

BeMA is a private non-profit organization established in 2017 as an association under Lebanese law, with a multilevel governance structure:

Board of Trustees (BOT): The BOT is composed of elected trustees. It is responsible for the overall performance of the organization.

Executive Committee: The Executive Committee is composed of elected directors. It acts as the executive body of the organization by implementing the decisions voted by the BOT and carrying out daily operations with the assistance of the Administrative Team.

BeMA is also assisted by top-tier local and international consultants, including advisers with respect to the legal and audit needs of the institution to ensure proper governance and accountability in accordance with international best practices.

BeMA-USA is a 501 (c) (3) non-profit organization registered in Washington, DC (EIN #46-5146223). In addition to nurturing cross-cultural dialogue and collaboration between the United States of America and Lebanon, BeMA-USA also works to advance the development of the Beirut Museum of Art (BeMA).



Lobby, *Ground floor*



Conservation Center, *First floor*



Roof Terrace, *Fifth floor*



Temporary Gallery, *Fourth floor*



When in distress, we turn to the arts to gather hope, to bring us together, and to restore our humanity.

It is our duty to build for future generations a platform that represents us all, and provides the tools and the space to foster unity and move forward collectively.

Join and support

**The time to join the
drive to forge a brighter
tomorrow is NOW.**

We invite you to partake in the making of a museum that will contribute to the writing of a new chapter in the social and cultural life of our city, and inspire and shape generations to come.

You can take ownership, get recognition, and be part of one of the most vibrant and influential cultural platforms in the region.

Capital Funding Tiers

The **Capital Funding Tiers** present the highest levels of opportunity for philanthropic support. The gifts made to the Capital Fund will support the architectural design and building of the physical spaces of the Museum. Donors to the Capital Fund will be given special privileges, recognition on the primary Donor Recognition Panel in the Museum’s Main Hall, and naming opportunities for selected spaces of the Museum.

Founder	\$10,000,000	and above
Pioneer	\$5,000,000	and above
Precursor	\$2,500,000	and above
Vanguard	\$1,000,000	and above
Patron	\$500,000	and above
Guardian	\$250,000	and above

Naming Opportunities

- Main Lobby
- Galleries
(Permanent, Temporary and Emerging artist)
- Education and Public Programs Wing
- Conservation Center
- Library
- Research Center
- The Museum Roof Terrace
- Outdoor Galleries
- Gardens
- Collection Storage and Archives
- Lift lobbies
- Public Staircase
- Promenade and Spiral Galleries

Space

Main Lobby

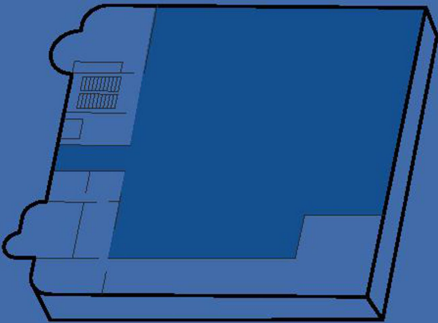
\$10,000,000 | 500 m2

GROUND FLOOR

Privileges

- Your name on the Founder’s Architectural Element
- Naming rights for a select physical space
- Leading placement on the Donor Recognition Wall in the Museum’s lobby under Founder
- Lifetime family honorary membership to the Museum
- Complimentary museum spaces for private events
- Private curator-led viewings of exhibitions, acquisitions, and special tours
- Curator-led meetings with artists and exclusive studio visits
- Curator-led tours of international art
- Invitations to the annual Donor Celebration Dinner and all events organized by the Museum
- Acknowledgment and thanks on the website and in reports to the community

GROUND FLOOR



Main Lobby

As the primary entry point, the main lobby provides a welcoming connection to the museum’s community, immersing visitors in art and culture as soon as they arrive. This vibrant gathering space of 500 m2, features the welcoming station, the museum boutique, and the main coffee shop.

Pioneer

\$5,000,000 and above

Spaces

Permanent Gallery 1 – Main

\$8,000,000 | 530 m2

2ND FLOOR

Temporary Gallery

\$7,000,000 | 530 m2

4TH FLOOR

The Museum Roof Terrace

\$5,000,000 | 620 m2

5TH FLOOR

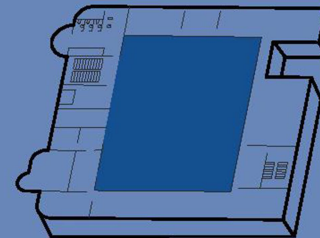
Privileges

- Your name on the Donor Recognition Wall in the Museum lobby within the Pioneer category
- Naming rights for a select physical space
- Lifetime family honorary membership to the Museum
- Complimentary museum spaces for private events
- Private curator-led viewings of exhibitions, acquisitions, and special tours
- Curator-led meetings with artists and exclusive studio visits
- Curator-led tours of international art
- Invitations to the annual Donor Celebration Dinner and all events organized by the Museum
- Acknowledgment and thanks on the website and in reports to the community

Pioneer

\$5,000,000 and above

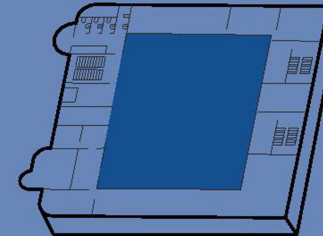
2ND FLOOR



Permanent Gallery 1 – Main

The 530 m2 Permanent Gallery 1 will showcase the main breadth of BeMA's permanent historical collection, a never exhibited national heritage. Comprised of nearly 2,400 artworks, this collection features masterworks of almost 500 Lebanese artists dating back to the late 19th century.

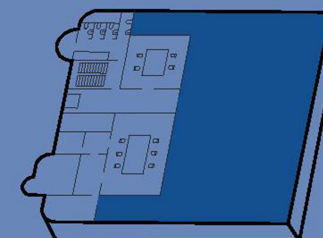
4TH FLOOR



Temporary Gallery

The temporary gallery is an exceptional multi-functional 530m2 space that will feature 7 meters height ceilings and state-of-the-art technology to showcase special exhibitions and performances.

5TH FLOOR



The Museum Roof Terrace

The museum rooftop provides stunning panoramic views of Beirut and immerses guests in an urban and artistic atmosphere, providing a year-round anchor for lively gatherings around the Museum bar. This 620 m2 space is perfect for private dinners, receptions, cocktail parties, networking events, and endless photo opportunities.

Precursor

\$2,500,000 and above

Spaces

Permanent Gallery 2

\$4,000,000 | 300 m²

3RD FLOOR

Education and Public Programs Wing (all rooms)

\$3,000,000 | 300 m²

1ST FLOOR

Conservation Center

\$2,500,000 | 230 m²

1ST FLOOR

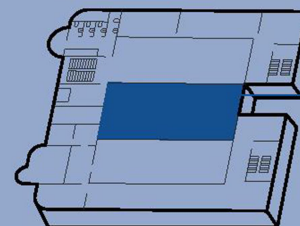
Privileges

- Your name on the primary Donor Recognition Wall in the Museum lobby within the Precursor category
- Naming rights for a select physical space
- Lifetime family honorary membership to the Museum
- Complimentary museum spaces for private events
- Private curator-led viewings of exhibitions, acquisitions, and special tours
- Curator-led meetings with artists and exclusive studio visits
- Curator-led tours of international art
- Invitations to the annual Donor Celebration Dinner and all events organized by the Museum
- Acknowledgment and thanks on the website and in reports to the community

Precursor

\$2,500,000 and above

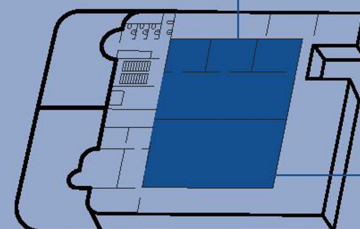
3RD FLOOR



Permanent Gallery 2

The 300m² permanent gallery 2 offers the opportunity to expand the exhibition of the BeMA collection, with spaces dedicated to historical and contemporary works on paper.

1ST FLOOR



Education and Public Programs Wing (all rooms)

The 300 m² education wing is a multi-use enlightening venue that will host vibrant education and public programming initiatives, positioning BeMA as a center of culture, inclusivity, civic engagement, and contemporary ideas and debates.

Conservation Center

The state-of-the-art conservation center will support BeMA's mission to preserve Lebanese modern heritage and care for the museum collections. While preservation and conservation happen out of the public eye in most museums, the center at BeMA is strategically located, facing the education wing where activities take many forms, from hosting interns to educating and providing opportunities to learn more about conservation, preservation, and collections care.

Vanguard

\$1,000,000 and above

Spaces

Emerging Artist Gallery

\$1,500,000 | 150 m²

3RD FLOOR

Permanent Gallery 2 (Comics)

\$1,000,000 | 100 m²

3RD FLOOR

Library

\$1,000,000 | 60 m²

5TH FLOOR

Collection Storage and Archives

\$1,000,000 | 860 m²

BASEMENT FLOOR

Public Staircase

\$1,000,000

ALL FLOORS

Lift Lobbies (5 total)

\$1,000,000 | 150 m²

ALL FLOORS (EXCLUDING GF LOBBY)

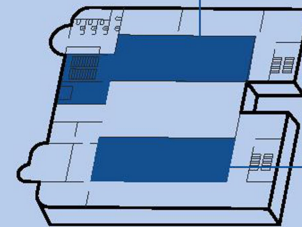
Privileges

- Your name on the primary Donor Recognition Panel in the Museum Lobby within the Vanguard category
- Naming rights for a select physical space dedicated space
- Lifetime family honorary membership to the Museum
- Complimentary museum spaces for private events
- Private curator-led viewings of exhibitions, acquisitions, and special tours
- Curator-led meetings with artists and exclusive studio visits
- Curator-led tours of international art
- Invitations to the annual Donor Celebration Dinner and all events organized by the Museum
- Acknowledgment and thanks on the website and in reports to the community

Vanguard

\$1,000,000 and above

3RD FLOOR



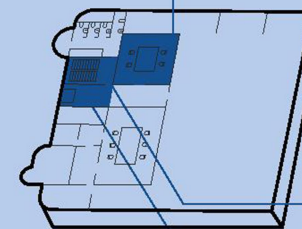
Emerging Artist Gallery

True to its mission to create opportunities for the production of new artistic works, BeMA will dedicate a permanent 150 m² space to be an incubator for emerging artists and future emissaries of Lebanese art, offering a gallery to engage and connect with the Museum's community.

Permanent Gallery 2 (Comics)

The Comics gallery will showcase the finest collection of this art form in the Arab world and will promote and advance the production and publication of scholarly and artistic works on comics.

5TH FLOOR



Library

The library is part of the information environment at the museum: it will house books, manuscripts, and periodicals to offer students and researchers a beautiful, state-of-the-art space in which to work and collaborate. Located on the top floor, adjacent to the research center and facing the roof terrace, the library will offer its visitors splendid views of the city and support the museum's mission.

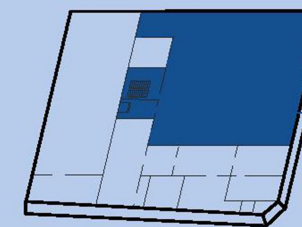
Public Staircase

The public staircase is the central connector between the museum entrance and the multitude of exhibition and cultural spaces from the ground floor to the rooftop, bringing visitors face-to-face with some of the most celebrated artworks.

Lift lobbies (5 total)

The elevator lobbies will welcome and move visitors. Each 150 m² space will witness the movement of enthusiastic guests on their way to explore the Museum galleries and join the activities.

BASEMENT



Collection Storage and Archives

In this state-of-the-art, custom-built 860 m² storage space, the museum will properly manage and care for the artworks, archival material, works on paper, and photographs.

Patron

\$500,000 and above

Spaces

Garden 1

\$750,000 | 375 m2

1ST FLOOR

Garden 2

\$750,000 | 375 m2

1ST FLOOR

Outdoor Gallery 1 (Permanent Gallery)

\$500,000 | 200 m2

2ND FLOOR

Outdoor Gallery 2 (Temporary Gallery)

\$500,000 | 170 m2

3RD FLOOR

Outdoor Gallery 3 (Permanent Gallery)

\$500,000 | 190 m2

4TH FLOOR

Research Center

\$500,000 | 80 m2

5TH FLOOR

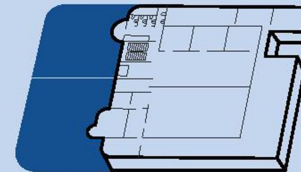
Privileges

- Your name on the primary Donor Recognition Panel in the Museum lobby within the Patron category
- Naming right for a select physical space
- Lifetime family honorary membership to the Museum
- Complimentary museum spaces for private events
- Private curator-led viewings of exhibitions, acquisitions, and special tours
- Curator-led meetings with artists and exclusive studio visits
- Invitations to the annual Donor Celebration Dinner and all events organized by the Museum
- Acknowledgment and thanks on the website and in reports to the community

Patron

\$500,000 and above

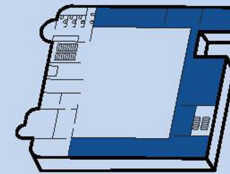
1ST FLOOR



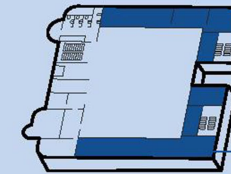
Gardens 1 & 2

The Gardens on level 1 offer unique naming opportunities in an elevated bustling courtyard and learning garden adjacent to the education and conservation wings.

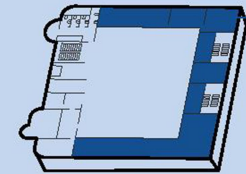
2ND FLOOR



3RD FLOOR



4TH FLOOR



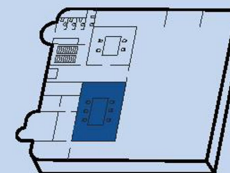
Outdoor Gallery 1 (Permanent Gallery)

The outdoor galleries of the iconic architecture are located on the main façade of the building and are accessed through the indoor exhibition spaces and the promenades. Each of the 3 outdoor galleries will be adorned by sculptures and contemporary installations, where art will spill out onto the streets, announcing the museum's presence to the city.

Outdoor Gallery 2 (Permanent Gallery)

Outdoor Gallery 3 (Temporary Gallery)

5TH FLOOR



Research Center

Setting BeMA apart from local and regional museums, the 80 m2 research center is one of the museum's main pillars. Located next to the library, scholars and educators will delve into publications and exhibitions of Lebanese art, to access, review, study, contemplate, and position artworks in an art historical context.

Guardian

\$250,000 and above

Spaces

Promenade / Spiral Gallery (Permanent Gallery 1)

\$250,000 | 25 m2

2ND FLOOR

Promenade / Spiral Gallery (Permanent Gallery 2)

\$250,000 | 25 m2

3RD FLOOR

Promenade / Spiral Gallery (Temporary Gallery)

\$250,000 | 25 m2

4TH FLOOR

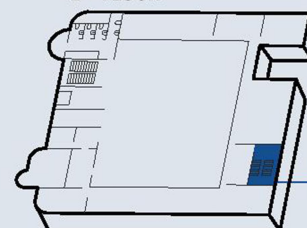
Privileges

- Your name on the primary Donor Recognition Panel in the Museum lobby within the Guardian category
- Naming rights for a select physical space
- Lifetime family honorary membership to the Museum
- Complimentary museum spaces for private events
- Private curator-led viewings of exhibitions, acquisitions, and special tours
- Curator-led meetings with artists and exclusive studio visits
- Invitations to the annual Donor Celebration Dinner and all events organized by the Museum
- Acknowledgment and thanks on the website and in reports to the community

Guardian

\$250,000 and above

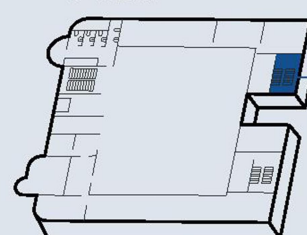
2ND FLOOR



These winding staircases offer a unique naming opportunity where visitors are connected to the different exhibition floors, merging the museum with the vibrancy of the surrounding community and the city.

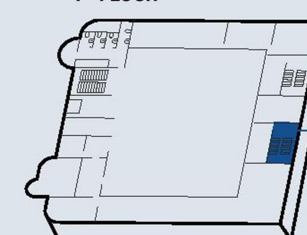
**Promenade / Spiral Gallery
(Permanent Gallery 1)**

3RD FLOOR



**Promenade / Spiral Gallery
(Permanent Gallery 2)**

4TH FLOOR



**Promenade / Spiral Gallery
(Temporary Gallery)**

Pre-Opening Program Tiers

The Pre-Opening Program Patronage Funding tiers present the highest levels of philanthropic support. Gifts made to the Pre-opening Program Fund will support the lifeblood and core of the Museum: the people, the programs, and the activities essential to building a dynamic institution.

Donors to the Program Patronage will be given special privileges and naming opportunities for a limited number of key positions and programs of the Museum. Conservation of the Collection, Education programs, Research and Digitization, and Artist Residencies and Exhibitions have been at the forefront of BeMA's activities since 2010 and will continue within and outside the museum walls.

Initiators	\$700,000 and above
Spearheads	\$500,000 and above
Benefactors	\$300,000 and above
Mentors	\$100,000 and above

Naming Opportunities for Core Programs and Key Positions

1- Executive Museum Director and CEO

2- Artistic Programs and Department

- Collection, Exhibition, and Research
 - Director of Exhibitions, Research, and Collection
 - Collection Manager/ Registrar/ Junior Curator
 - Art Handler
 - Researchers
 - Exhibitions (cost)
 - Interns and Trainees
- Conservation
 - Conservator
 - 2 Assistant Conservators
 - Interns and Trainees
 - Yearly Conservation Studies Scholarship
 - Conservation Equipment
- Archives and Digital Lab
 - Archives and Digitization Manager
 - Interns and Trainees
 - Digital lab Equipment
- Artist Residencies

3- Education and Community Outreach Programs and Department

- Education, Community, Outreach Programs
 - Director of Education and Community Outreach programs
 - Programs Manager
 - Interns and Trainees
 - Equipment
 - Programs costs

4- Administration and Development Department

- Director of Administration
- Coordinator
- Fundraising and Sponsorship Development
- Marketing and Communication
- Legal
- Audit
- Accounting
- Equipment and IT support

Initiators

\$700,000 and above

Privileges

- Your name on the primary Donor Recognition Panel in the Main Hall within the **Initiators** category
- Naming rights for the selected program or position
- Recognition on all digital and collateral print material
- Lifetime family honorary membership to the Museum
- Private curator-led viewings of exhibitions, acquisitions, and special tours
- Curator-led meetings with artists and exclusive studio visits
- Invitations to the annual Donor Celebration Dinner and all events organized by the Museum
- Acknowledgment and thanks on the website and in reports to the community

Artistic Programs and Department

3-Year cost \$750,000

- **Collection, Exhibition, and Research:** Director of Exhibitions, Research, and Collection; Collection Manager/ Registrar/ Junior Curator; Art Handler; Researchers; Exhibitions (cost); Interns and Trainees
- **Conservation:** Conservator; 2 Assistant Conservators; Interns and Trainees, Yearly Conservation studies Scholarship, Conservation Equipment
- **Archives and Digital Lab:** Archives and Digitization Manager; Interns and Trainees; Digital lab Equipment
- **Artist Residencies**

Initiators

\$700,000 and above



Spearheads

\$500,000 and above

Privileges

- Your name on the primary Donor Recognition Panel in the Main Hall within the **Spearheads** category
- Naming rights for the select program or position
- Recognition on all digital and collateral print material
- Lifetime family honorary membership to the Museum
- Private curator-led viewings of exhibitions, acquisitions, and special tours
- Curator-led meetings with artists and exclusive studio visit
- Invitations to the annual Donor Celebration Dinner and all events organized by the Museum
- Acknowledgment and thanks on the website and in reports to the community

Administration and Development Department

3-Year cost \$600,000

- Fundraising and Development; Marketing and Communication campaigns;
- Director of Administration; Coordinator, Legal, Audit, and Accounting Services, Equipment, and IT support

Spearheads

\$500,000 and above



Benefactors

\$300,000 and above

Privileges

- Your name on the primary Donor Recognition Panel in the Main Hall within the **Benefactors** category
- Naming rights for the select program or position
- Recognition on all digital and collateral print material
- Lifetime family honorary membership to the Museum
- Curator-led meetings with artists and exclusive studio visits
- Invitations to the annual Donor Celebration Dinner and all events organized by the Museum
- Acknowledgment and thanks on the website and in reports to the community

Executive Museum Director and CEO

3-Year cost \$325,000

Benefactors

\$300,000 and above



Mentors

\$100,000 and above

Privileges

- Your name on the primary Donor Recognition Panel in the Main Hall within the **Mentors** category
- Naming rights for the select program or position
- Recognition of all digital and collateral print material
- Complimentary museum spaces for private events
- Invitations to the annual Donor Celebration Dinner and all events organized by the Museum
- Acknowledgment and thanks on the website and in reports to the community

Education and Outreach Programs and Department

3-Year cost \$250,000

- **Education, Community, and Public Outreach Programs:** Director of Education and Community Outreach programs; Programs Manager, Interns and Trainees; Equipment; Programs costs

Mentors

\$100,000 and above





Beirut Museum of Art

www.bema.museum

108 Sursock Street, Ashrafieh, Beirut, Lebanon